



# **CAMPUS MASTER PLAN 2025-35 UPDATE**

---

# Statute / Regulation

- Florida Statute 1013.30
- Board of Governors Regulations, Chapter 21

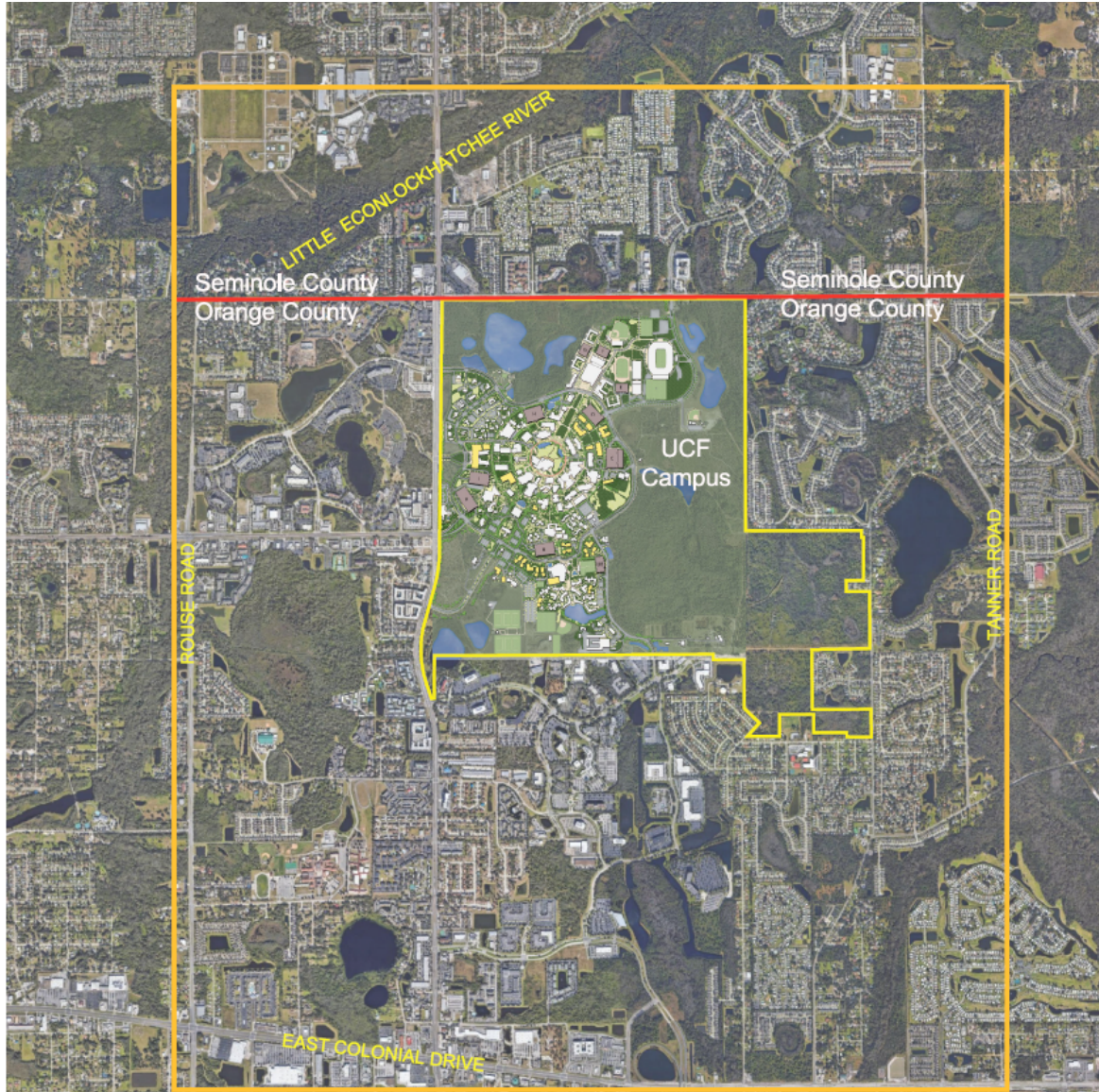
# Elements

## Introduction

1. Future Land Use
2. Transportation
3. Housing
4. General Infrastructure
5. Conservation
6. Recreation and Open Space
7. Intergovernmental Coordination
8. Capital Improvements

## Evaluation and Appraisal Report

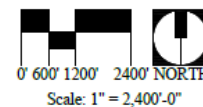




- County Boundary
- Study Boundary
- UCF Campus Boundary

# JURISDICTION of the Campus Master Plan extends only to the

# UCF MAIN CAMPUS



# Format – Goals, Objectives & Policies

## GOALS, OBJECTIVES & POLICIES

**GOAL 1: The long-term end toward which programs or activities are ultimately directed.**

**OBJECTIVE 1.1: A specific, measurable, intermediate end that is achievable and marks progress toward a goal.**

POLICY 1.1.1: The way in which programs and activities are conducted to achieve an identified goal.

POLICY 1.1.2: More ways by which to achieve the goal.

# Format – Maps.....Data and Analysis



## 3.0 HOUSING

- The Towers at Knights Plaza

### Managed and Affiliated Housing

### ADA Compliance

group study rooms, a grab-and-go food store, a mail center, a large outdoor patio space with wireless internet, and offices for residence life staff, an academic advisor, and a counselor.

The Towers, four seven-story buildings with a combined design capacity of 2,004 student spaces, was constructed in three phases, opening in 2006, 2007, and 2008 respectively. Students may choose from a combination of 4 bedroom / 2 bath, 4 bedroom / 4 bath, and 1 bedroom / 1 bath apartments. All bedrooms are single occupancy. Small study lounges are included on six (6) of the seven (7) floors. The ground floor lobbies, and adjacent courtyards provide student programming space for educational and social events.

UCF manages, or affiliates with, properties located off-campus including NorthView, which serves the main campus.

When all UCF-owned and -managed facilities have reached full capacity, students are referred to University-affiliated housing. Affiliated properties include Knights Circle, The Pointe at Central, and Union West on the Downtown Campus. Residence Life services are provided at each affiliated complex by the incumbent property management firm(s), and the UCF Police Department provides services at Knights Circle, The Pointe at Central, and the Downtown Campus including UnionWest.

UCF Housing complies with ADA Accessibility Guidelines (ADAAG) throughout the building inventory.

### Housing Inventory

#### Beds on the Main Campus



Community	Building	Type	Beds
<b>APOLLO COMMUNITY</b>			
	Lake Hall	Suite	108
	Osceola Hall	Suite	103
	Polk Hall	Suite	108
	Volusia Hall	Suite	108
<b>APOLLO Total Beds</b>			<b>427</b>
<b>LIBRA COMMUNITY</b>			
	Brevard Hall	Suite	121
	Orange Hall	Suite	156
	Seminole Hall	Suite	162
	Citrus Hall	Suite	116
	Sumter Hall	Suite	232
	Flagler Hall	Suite	232
<b>LIBRA Total Beds</b>			<b>1,019</b>

# Approach...inclusive

## UCF 2025-35 Campus Master Plan Update - Element Teams (updated 3/26/24)

<b>2025-35 CMP STEERING COMMITTEE</b>	<b>Chair:</b> Jon Varnell, VP Admin Ops <ul style="list-style-type: none"> <li>Jon Bates, AVP Real Estate &amp; Space Admin (RESA)</li> <li>Ben Davis, AVP Planning, Design &amp; Const. (PDC)</li> <li>Jennifer Elliot, Director Arboretum &amp; Sustainability</li> <li>Bill Martin, University Architect, PDC</li> <li>Duane Siemen, AVP UES</li> </ul>	<ul style="list-style-type: none"> <li>Kevin Sowers, AVP Auxiliary Services</li> <li>Justin Wisor, AVP Facilities Operations (FO)</li> <li>SGA Student Body President<sup>1</sup> (Brandon Greenaway 2023-24)</li> <li>Susan Hutson, Mgr. of Campus Planning, PDC</li> </ul>
<b>Element</b>	<b>Core Committee (3-5 persons)</b>	<b>Advisory Resources</b>
<b>1.0 FUTURE LAND USE</b> <a href="#">BOG 201.204</a>	<b>Chair:</b> Bill Martin, PDC <ul style="list-style-type: none"> <li>Jon Bates, AVP RESA</li> <li>Jen Elliott, Director Arboretum &amp; Sustainability</li> <li>Duane Siemen, AVP UES</li> <li>Justin Wisor, AVP FO</li> </ul>	<ul style="list-style-type: none"> <li>Susan Hutson, PDC</li> <li>UMPC Chair (Michelle Dusseau, COS, 2023-24)</li> <li>SGA Student Body President (Brandon Greenaway 2023-24)</li> </ul>
<b>2.0 TRANSPORTATION</b> <a href="#">BOG 201.205</a>	<b>Chair:</b> Kevin Sowers, AVP Aux. Services <ul style="list-style-type: none"> <li>Jon Bates, AVP RESA</li> <li>Louann Huynh, Director Parking &amp; Transportation</li> <li>Anand Rampersad, Asst Dir Parking &amp; Transportation</li> <li>Terry Wheeler, Chair Parking &amp; Transp. Committee</li> <li>James Mangan, UCF PD</li> </ul>	<ul style="list-style-type: none"> <li>Susan Hutson, PDC</li> <li>Hatem Abou-Senna, PE, CECS Faculty</li> <li>RJ Mueller, UCFIT &amp; Cycling Advocate</li> <li>SGA Safety &amp; Transportation Coord. (Christina Cabrera 2023-24)<sup>2</sup></li> </ul>
<b>3.0 HOUSING</b> <a href="#">BOG 201.206</a>	<b>Chair:</b> Chris MacDonald, AVP Housing & Res Life <ul style="list-style-type: none"> <li>Jon Bates, AVP RESA</li> <li>Peter Mitchell, Dir Housing Admin &amp; Finance</li> </ul>	<ul style="list-style-type: none"> <li>Meredith Varner, HRL</li> <li>Richard Berwanger, HRL</li> <li>Susan Hutson, PDC</li> <li>SGA Director of Student Affairs (Brianna Urea 2023-24)</li> </ul>
<b>4.0 GENERAL INFRASTRUCTURE</b> <a href="#">BOG 21.207</a>	<b>Chair:</b> Duane Siemen, AVP UES <ul style="list-style-type: none"> <li>Alex Parlato, UES</li> <li>Michael Scruggs, AVP UCF IT, Deputy CIO/CTO</li> <li>Justin Wisor, AVP FO</li> </ul>	<ul style="list-style-type: none"> <li>Susan Hutson, PDC</li> <li>Amanda Lindsay, UES</li> </ul>
<b>5.0 CONSERVATION</b> <a href="#">BOG 21.208</a>	<b>Chair:</b> Jen Elliott, Director Arboretum & Sustainability <ul style="list-style-type: none"> <li>Alex Parlato, UES</li> <li>Travis Simmons, Director LNR</li> <li>Justin Wisor, AVP FO</li> </ul>	<ul style="list-style-type: none"> <li>Susan Hutson, PDC</li> <li>Jack Stout, Emeritus Faculty, Biology</li> <li>John Guziejka, LNR</li> <li>Amanda Lindsay, UES</li> </ul>

<b>6.0 RECREATION &amp; OPEN SPACE</b> <a href="#">BOG 21.209</a>	<b>Chair:</b> Gary Cahen, Rec & Wellness Cntr <ul style="list-style-type: none"> <li>Jen Elliott, Dir. Arboretum &amp; Sustainability</li> <li>David Hansen, Sr Exec Asse Athl. Dir &amp; COO</li> </ul>	<ul style="list-style-type: none"> <li>Susan Hutson, PDC</li> <li>Justin Wisor, AVP FO</li> <li>Chris MacDonald, AVP Housing &amp; Res Life</li> <li>Heather Marshall, RWC</li> <li>James Wilkening, Exec.Dir. Rec &amp; Wellness Cntr</li> </ul>
<b>7.0 INTERGOVERNMENTAL COORDINATION</b> <a href="#">BOG 21.210</a>	<b>Chair:</b> Fred Kittinger, Sr AVP Govt & Comm Relations <ul style="list-style-type: none"> <li>Jon Bates, AVP RESA</li> <li>Bill Self, AD Undergraduate Affairs</li> </ul>	<ul style="list-style-type: none"> <li>Janet Owen, VP Govt &amp; Community Relations</li> <li>Susan Hutson, PDC</li> <li>SGA Gov. Affairs Coord. (Brooke Martin 2023-24)</li> <li>Austin Wilson, Intern, Govt &amp; Comm Relations</li> </ul>
<b>8.0 CAPITAL IMPROVEMENTS</b> <a href="#">BOG 21.211</a>	<b>Chair:</b> Ben Davis, AVP PDC <ul style="list-style-type: none"> <li>Bill Martin, PDC</li> <li>Duane Siemen, AVP UES</li> <li>Justin Wisor, AVP FO</li> <li>Jon Bates, AVP RESA</li> </ul>	<ul style="list-style-type: none"> <li>Susan Hutson, PDC</li> <li>Chuck Reilly, Academic Affairs</li> <li>Winston Schoenfeld, Office of Research</li> <li>Adrienne Frame, Student Success and Well-Being</li> </ul>
<b>OTHER</b>		
<b>SUSTAINABILITY</b> <a href="#">BOG 21.202 (f) (c) 3</a>	<b>Chair:</b> Jen Elliot, Dir. Arboretum & Sustainability <ul style="list-style-type: none"> <li>Ryan Chabot, Sustainability Coordinator</li> <li>Alex Parlato, UES</li> </ul>	<ul style="list-style-type: none"> <li>SGA Sustainability &amp; Innovation Coordinator (Sydni Burge 2023-24)</li> <li>Susan Hutson, PDC</li> </ul>
<b>PRIMARY CONSULTANT<sup>3</sup></b> CORGAN <a href="#">corgan.com</a> Team: Carissa Oyedele Benjamin Patterson Others	<b>1.0 FUTURE LAND USE CONSULTANT</b> GAI Consultants <a href="#">gaiconsultants.com</a> Team: A. Blake Drury Peter Sechler Others	<b>2.0 TRANSPORTATION CONSULTANT</b> VHB (Vanasse Hangen Brustlin) <a href="#">vhb.com</a> Team: Joedel Zaballero Ryan Wenger Others
<b>EVALUATION &amp; APPRAISAL REPORT (EAR)</b> <a href="#">BOG 21.202(7)</a>	<ul style="list-style-type: none"> <li>Bill Martin, University Architect, PDC</li> <li>Susan Hutson, PDC</li> </ul>	
<b>INTRODUCTION</b>	<ul style="list-style-type: none"> <li>Bill Martin, University Architect, PDC</li> <li>Susan Hutson, PDC</li> </ul>	

[5-YEAR STRATEGIC PLAN](#)

# UNLEASHING POTENTIAL

Amplifying the power of knowledge and discovery, the University of Central Florida unleashes the potential of our students, faculty, staff, and community. As a next-generation public research institute, we are an inclusive community of thinkers, doers, creators, innovators, healers, and leaders striving to shape the future and solve the world's most challenging problems.

**Approach....strategic**

# Approach....sustainable

SUSTAINABILITY	<h2>5.0 CONSERVATION</h2>
	<p>Sustainability and conservation are intrinsically linked through their shared goal of responsible resource management.</p> <ul style="list-style-type: none"> <li>• Conservation practices - such as protecting endangered species or preserving natural habitats - contribute directly to long-term sustainability by maintaining ecological balance and ensuring the well-being of future generations.</li> <li>• Sustainable practices - such as renewable energy adoption, waste reduction, and ethical consumption - promote conservation efforts by minimizing environmental impact and safeguarding our planet's finite resources.</li> </ul> <p>Goals, Objectives and Policies that align with the Sustainability Tracking, Assessment &amp; Rating System™ (STARS)<sup>1</sup> are shown in <b>green text</b>, with the specific <i>Category and Impact Area</i> and <i>Credit #</i> indicated in parentheses after the Goal, Objective, or Policy.</p> <p>Specific STARS sections in this element are aligned with these Categories and Impact Areas: <b>Academics (AC)</b>, <b>Engagement (EN)</b>, and <b>Operations (OP)</b>, and these STARS 3.0 credits:</p> <ul style="list-style-type: none"> <li>• <b>AC-4: Applied Learning</b></li> <li>• <b>EN-1: Outreach and Communications</b></li> <li>• <b>OP-3: Water Use</b></li> <li>• <b>OP-4: Ecologically Managed Grounds</b></li> <li>• <b>OP-5: Energy Use</b></li> <li>• <b>OP-6: Greenhouse Gas Emissions</b></li> <li>• <b>OP-12: Waste Generation and Recovery</b></li> </ul>
RELATED ELEMENTS	<p>See 1.0 FUTURE LAND USE for a table of the acreages of Developed, Developable, and Undevelopable campus lands and the Future Land Use Map.</p> <p>See 2.0 TRANSPORTATION for policies designed to discourage dependence on personal automobiles and to encourage alternative modes of transportation on campus.</p> <p>See 4.0 GENERAL INFRASTRUCTURE for more information on Energy Infrastructure and Conservation, and Water Use and Conservation.</p>
<p><sup>1</sup> STARS (Sustainability Tracking, Assessment, and Rating System) is "a transparent, self-reporting framework for colleges and universities to measure their sustainability performance."</p>	
<p>4   5.3 CONSERVATION - Introduction</p>	

<h2>5.0 CONSERVATION</h2>	
<h3>5.2 GOALS, OBJECTIVES and POLICIES (GOP)</h3>	
<h4>A. Conservation of Natural Ecosystems and Resources - GOP</h4>	
NARRATIVE	<p>The Arboretum and Sustainability Initiatives (ASI) department, a unit of UCF Facilities &amp; Business Operations (FBO), manages the campus natural lands with mechanical vegetation control, prescribed fire (controlled burns), and invasive species removal; and maintains a network of trails, making these areas accessible for nature enjoyment and passive recreation.</p> <p>The University has received state-wide recognition for its land management program, which focuses on conservation management at the urban-wildland interface. The goals and policies for natural lands conservation presented in this element will enhance the diversity and abundance of native plants and animals living in campus natural lands and will help establish UCF as a national leader in conservation management and environmental stewardship.</p> <p>Using and conserving water resources appropriately, improving air quality, and preventing or minimizing pollution are key aspects of the University's commitment to conservation and sustainability.</p> <ul style="list-style-type: none"> <li>• The University's effort to protect its surface waters is guided by its <i>National Pollutant Discharge Elimination System (NPDES)</i> Permit. This 5-year stormwater permit, overseen by UCF's Utilities and Engineering Services (UES)<sup>2</sup> department, is issued by the Florida Department of Environmental Protection (FDEP), and reported for in years two and four.</li> <li>• Air quality is addressed through transportation initiatives, such as the use of alternative fuels and renewables, and the University's <i>Air Operation Permit</i>.<sup>3</sup> This permit is also issued by FDEP, and overseen by UCF's Environmental Health and Safety department.</li> </ul>
<p><b>GOAL 1: Conserve the region's biodiversity and natural heritage by designating significant campus conservation areas, developing wildlife-friendly landscapes, and minimizing the impact of future development on vulnerable species and habitats.</b></p>	
<p><b>OBJECTIVE 1.1: Review and designate the status of all environmentally</b></p>	<p><b>POLICY 1.1.1: The University shall maintain in a natural state all areas identified as Conservation or Preservation in this CMP. (OP-4: Ecologically Managed Grounds)</b></p>
<p><sup>2</sup> UCF uses an outside consultant, Harris Engineering, to manage this permit.  <sup>3</sup> UCF uses an outside consultant, Grove Engineering, to manage this permit.</p>	
<p>5   5.3 CONSERVATION - GOP</p>	



An aerial site plan of a university campus. The plan shows various buildings, roads, and green spaces. A white rectangular text box is overlaid in the center, containing the text 'Content Updates'. The text is in a large, bold, black sans-serif font. The background is a detailed architectural rendering of the campus layout, including buildings, parking lots, and landscaping.

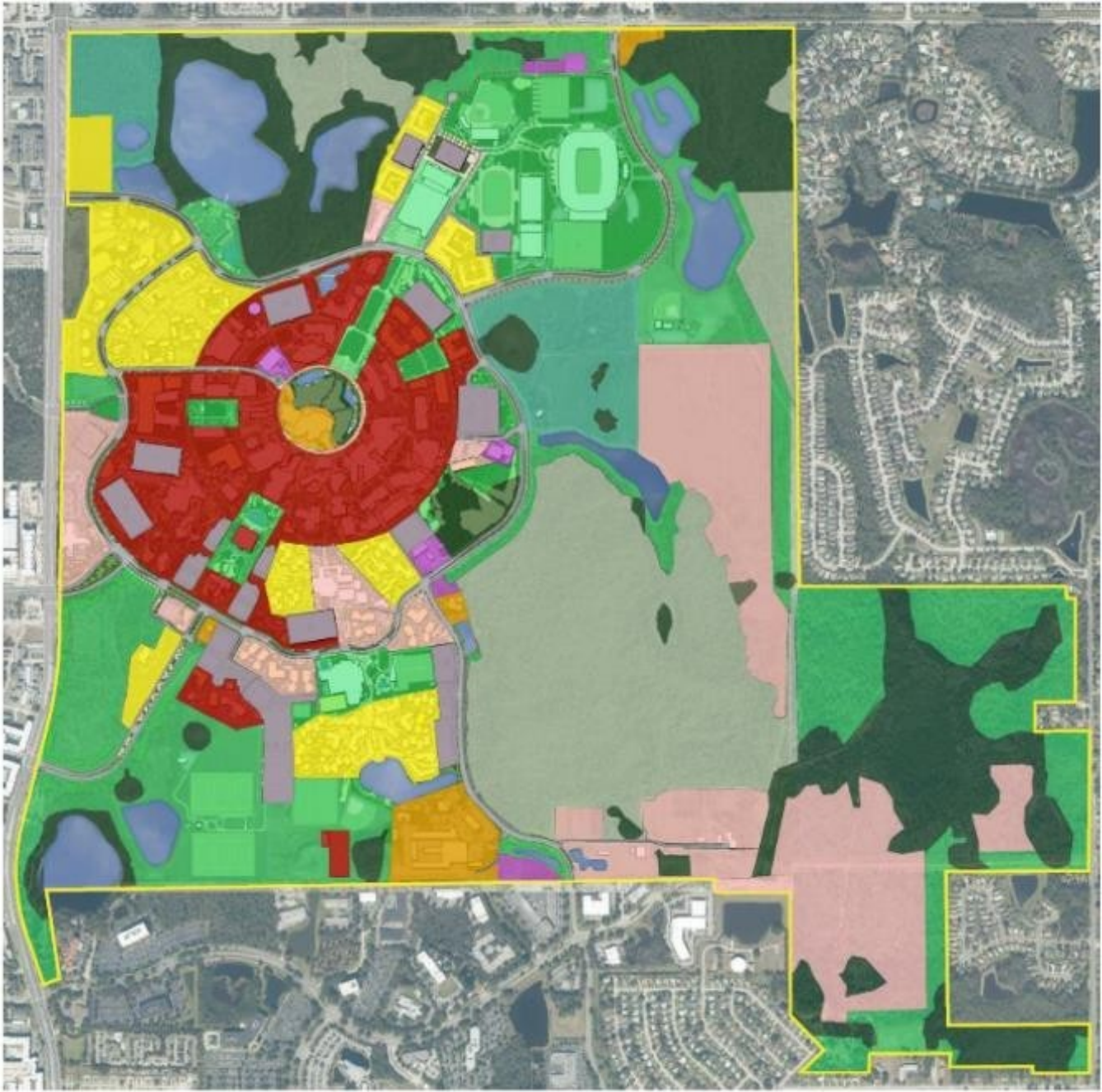
# Content Updates

# Future Land Use

- Minor content edits to Goals, Objectives and Policies
- Many changes to the Future Land Use Map, see the following slides



# CMP 2020-30 Future Land Use Map

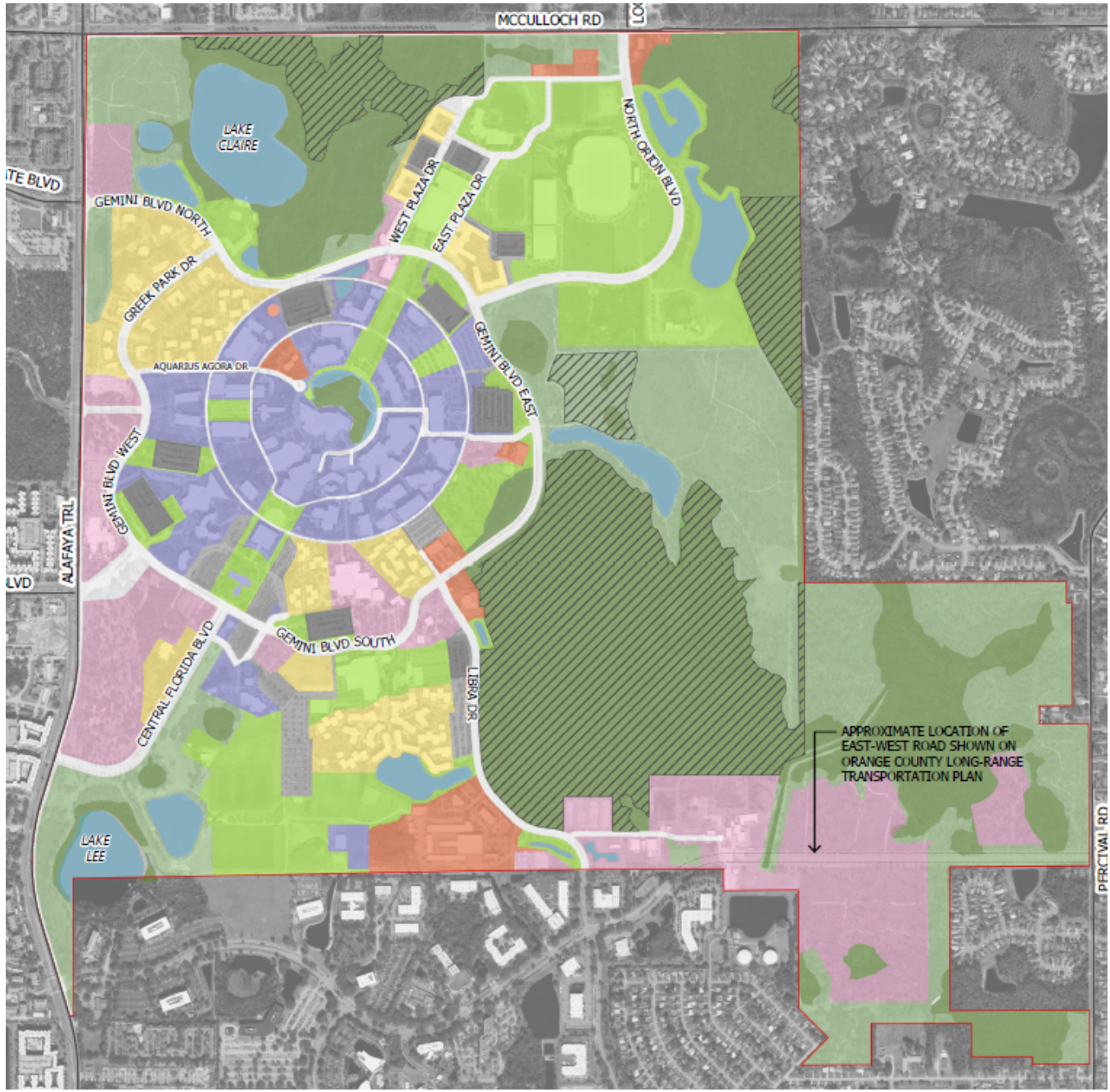


**Land Use Category**

- Academic
- Support
- Residential
- Mixed Use
- Utility
- Parking
- Recreation/ Open Space
- Wetland
- Upland Conservation
- Conservation Easement
- Lakes

# CMP 2025-35

## Future Land Use Map



### Legend

#### Future Land Use Categories

- Framework Streets and Connections
- Academic and Student Support Uses
- Mixed Use
- Parking
- Recreation and Open Space - Developed
- Recreation and Open Space - Natural Preserve
- Conservation - Wetlands
- Conservation - Easements
- Residential
- Non-Academic Support Uses

### Legend Updates

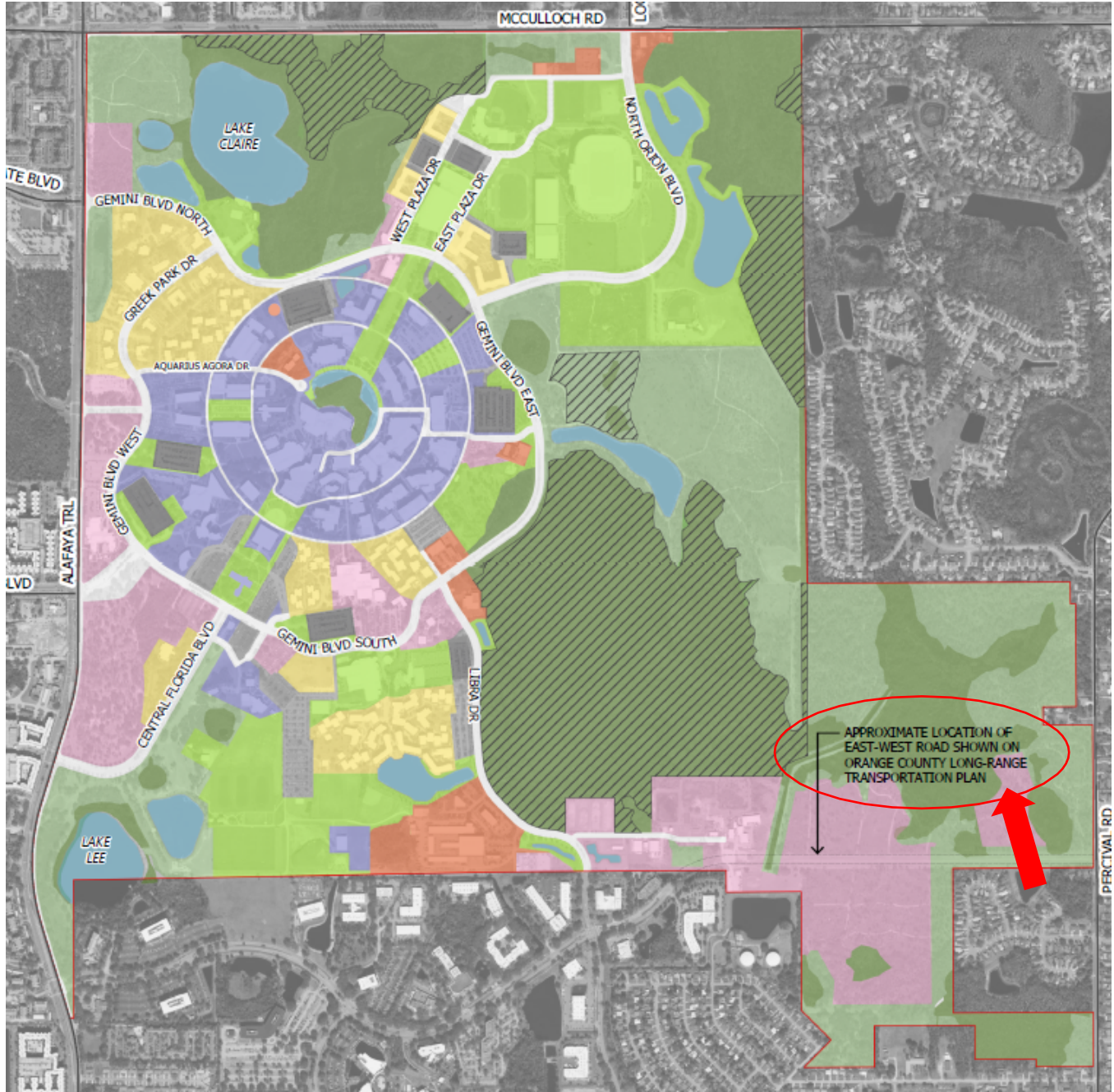
Categories merged and renamed

# CMP 2025-35 Future Land Use Map

## Legend

### Future Land Use Categories

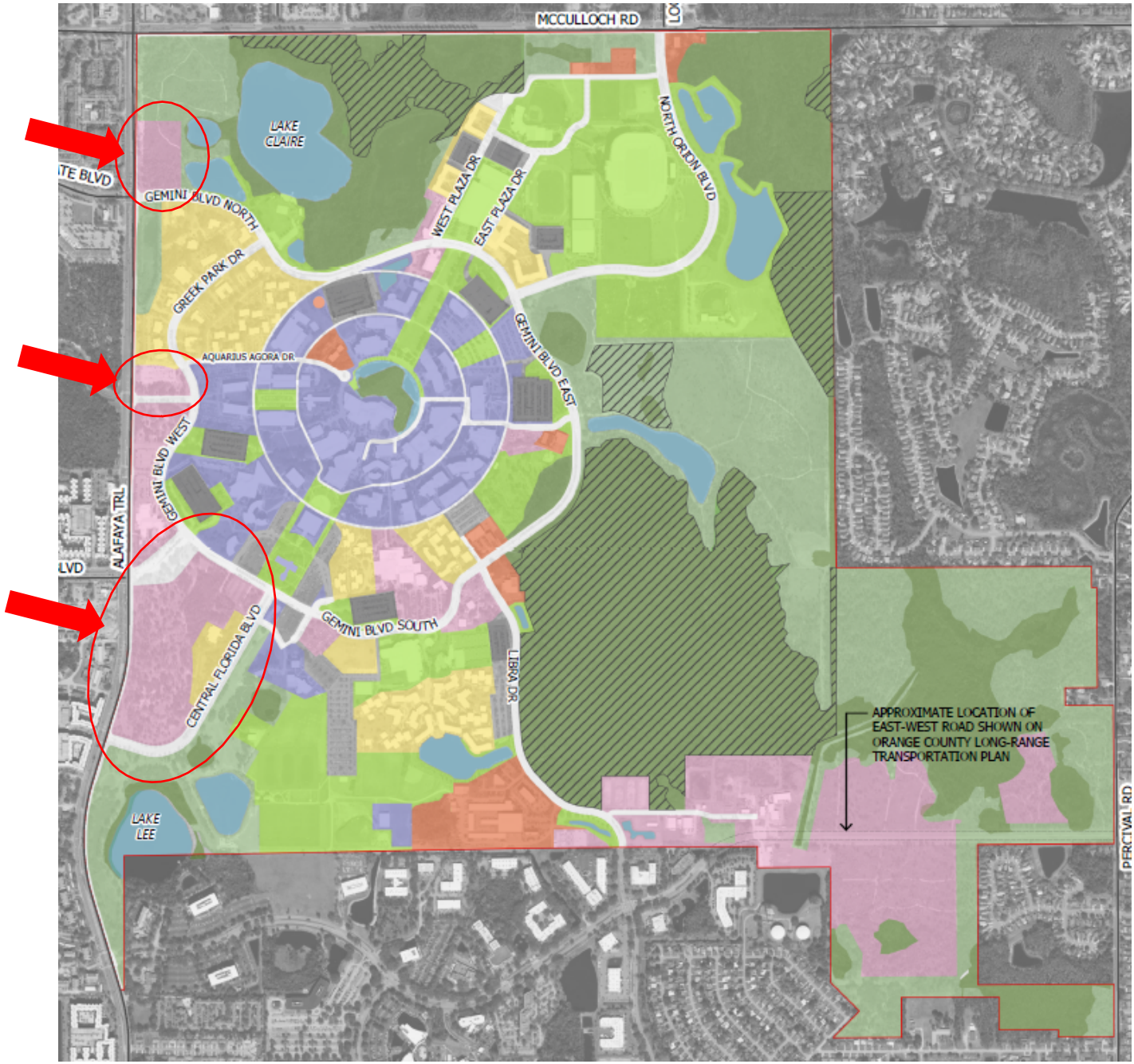
- Framework Streets and Connections
- Academic and Student Support Uses
- Mixed Use
- Parking
- Recreation and Open Space - Developed
- Recreation and Open Space - Natural Preserve
- Conservation - Wetlands
- Conservation - Easements
- Residential
- Non-Academic Support Uses



Added note for Orange County east-west future road

# CMP 2025-35

## Future Land Use Map



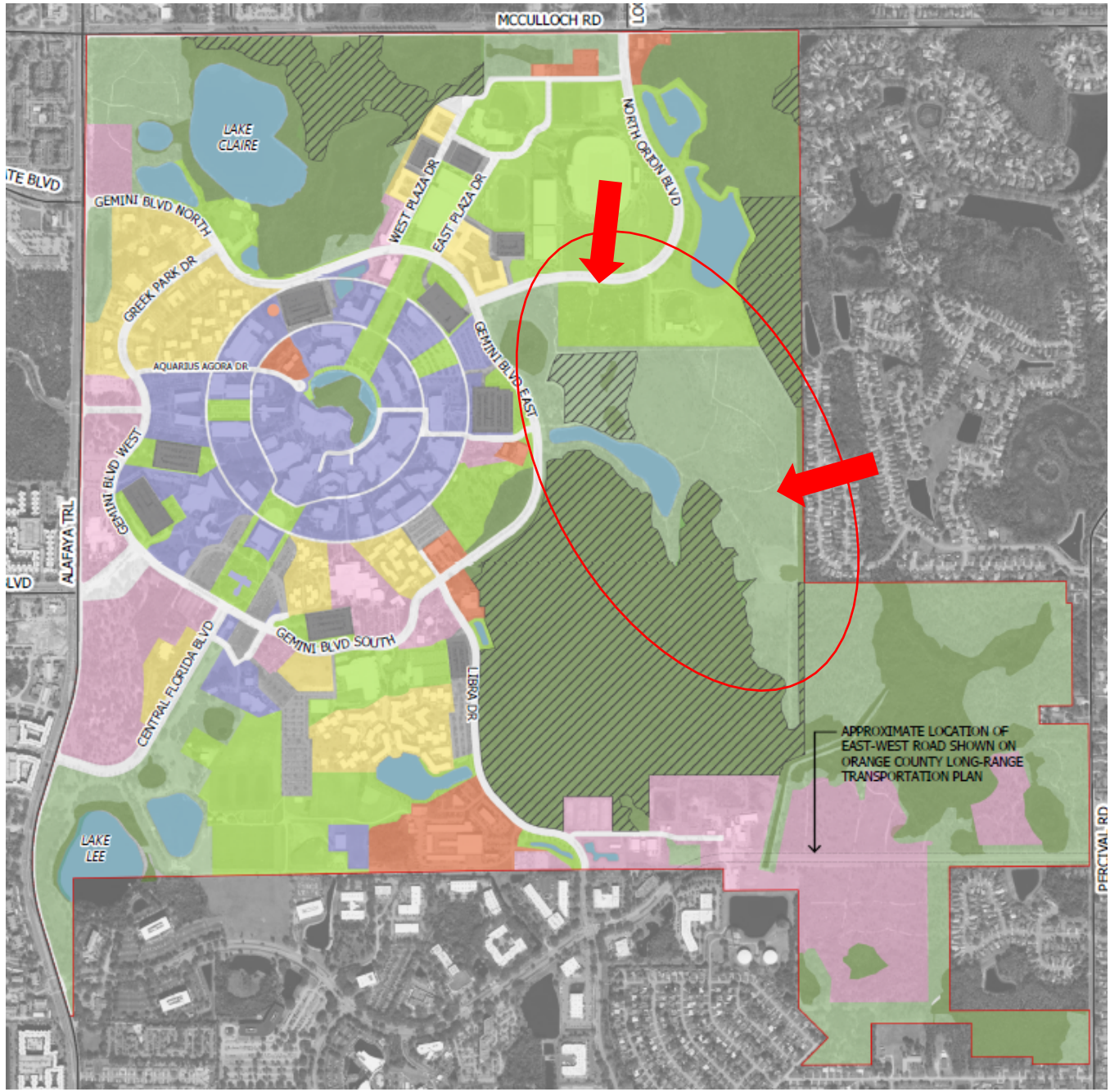
### Legend

- Future Land Use Categories
- Framework Streets and Connections
  - Academic and Student Support Uses
  - Mixed Use
  - Parking
  - Recreation and Open Space - Developed
  - Recreation and Open Space - Natural Preserve
  - Conservation - Wetlands
  - Conservation - Easements
  - Residential
  - Non-Academic Support Uses

**Rec & Open Space, Housing changed to Mixed Use**

# CMP 2025-35

## Future Land Use Map



### Legend

- Future Land Use Categories
- Framework Streets and Connections
  - Academic and Student Support Uses
  - Mixed Use
  - Parking
  - Recreation and Open Space - Developed
  - Recreation and Open Space - Natural Preserve
  - Conservation - Wetlands
  - Conservation - Easements
  - Residential
  - Non-Academic Support Uses

**Expanded Rec & Open Space for Athletics**

**Mixed Use changed to Rec & Open Space – Natural Preserve**



# Capital Improvements

- Removed Implementation Section
- Reorganized Goals & Policies:
  - Goal 1 – focused on facility needs and growth
  - Goal 2 – focused on funding
  - Goal 3 – focused on sustainability & resilience
- Evaluates the need for public facilities as identified in other campus master plan elements
- Schedule of Capital Projects (SCP) lists projects over \$4M anticipated within the next 10 years;
- Capital Improvements Map shows potential building locations



# Capital Improvements Map

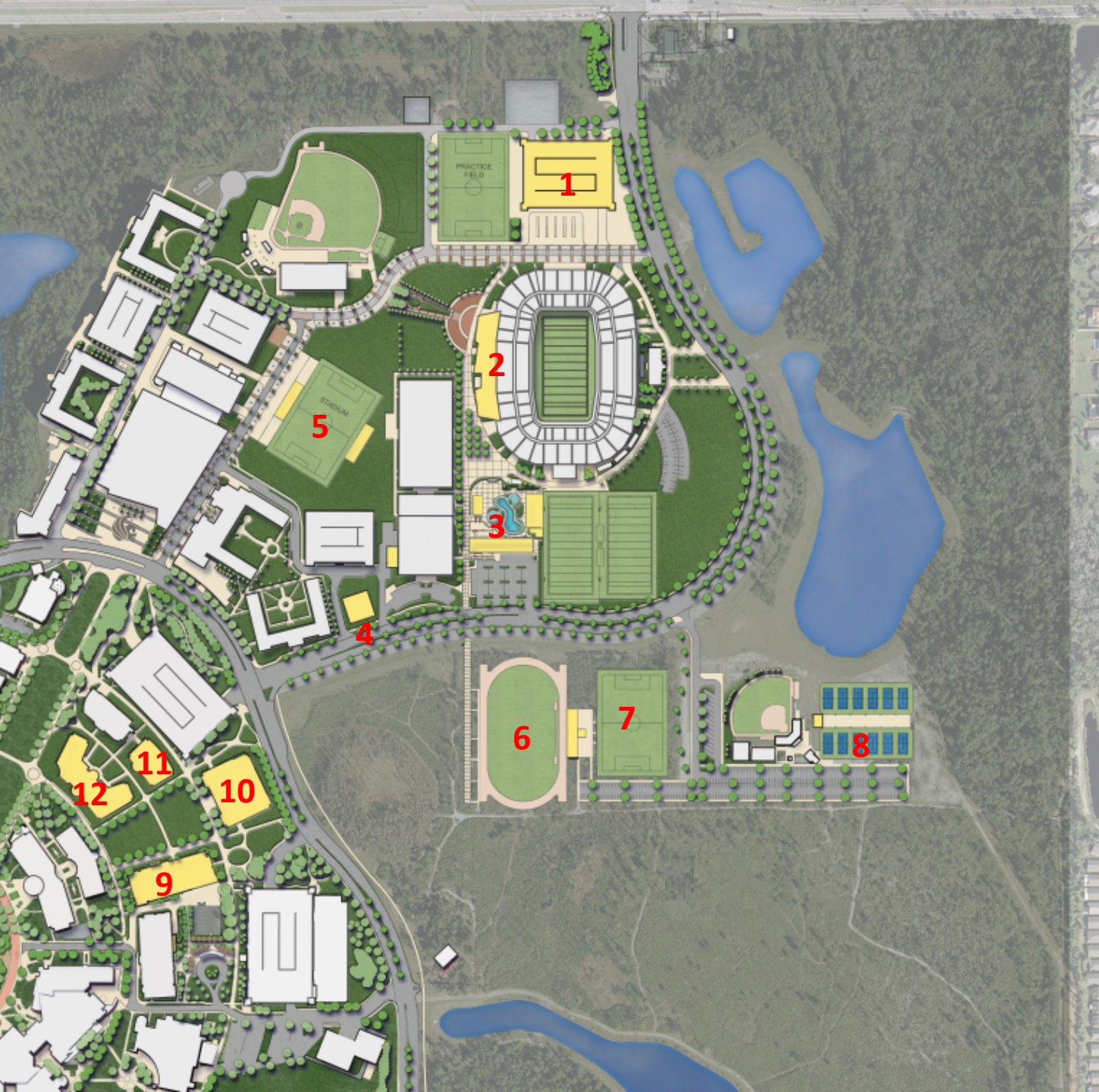


## Schedule of Capital Projects

**Exhibit 8.4-1  
10-Year Schedule of  
Capital Projects (SCP)**

MAP KEYS correspond with projects shown on 8.4-2 CAPITAL IMPROVEMENTS MAP		Campus	Bldg.#	Project Type	Recommendation	FCI	G&F	PROJECT SCOPE - Variables such as priority/cost/timing are recorded annually on the 5-YEAR CAPITAL IMPROVEMENT PLAN	
<b>ALL CAMPUSES MAP KEY</b>									
<b>3-YEAR COMMITTED PROJECTS</b>									
<b>MAIN CAMPUS</b>		1	Biological Sciences	Main 0001	0020	Renov/Remod	2021 EPS	116,607	In Construction (PECO \$21.63M, 2023-23 CIP)
		2	Chemistry Building	Main 0001	0005	Renov/Remod	2021 EPS	40,073	In Construction (PECO \$30.0M, 2023-24 CIP)
		3	John C Hitt Library (aka 21 <sup>st</sup> Century Library)	Main 0001	0002	Renov/Remod	CITF 2023 CPC 2024		Ph 2B in construction. Future Ph to be designed.
		4	(New) Creative School for Children	Main 0001	(0024)	New	CITF 2024	14,678	Replace Creative School for Children on new site (CITF \$17.0M, 2025-26 CIP)
		5	Recreation & Wellness Center	Main 0001	0088	Reno	CITF 2024	150,111	HVAC Systems (CITF \$13.0M, 2024-25 CIP)
		6	Football Practice Field Relocation	Main 0001	NA	Sitework		NA	Clears site for Football Ops Building & McNamara Cove
		7	Roth Tower at FBC Mortgage Stadium	Main 0001	0135	New / Renov.		NA	In Design/Construction
		8	Student Union	Main 0001	0052	Renov/Remod	CITF 2025	83,900 of 181,755	(CITF \$6.0M, 2025-26 CIP)
<b>OTHER CAMPUSES</b>		No Key	Dr. Phillips Nursing Pavilion (aka College of Nursing Building)	AHSC Site 0018	1003	New	2020-30 SCP	NA	90,000 In Construction (2022 GAA Section 197, Legislative initiative funded w/o EPS Rec.)
		No Key	Rosen Main Building	RCHM Site 0015	0903	Renov/Remod		158,980	Remodeling for greater space efficiency. Funded \$12.8M
<b>MAIN CAMPUS</b>									
<b>PROJECTS CONSISTENT WITH THE CAMPUS DEVELOPMENT AGREEMENT</b>									
		No Key	McCulloch Road Improvements	Main 0001			2020 CDA		Orange Co. - Provide mid-block crossing at Northgate Circle
		No Key	Cross-Campus Bike Path	Main 0001			2020 CDA		UCF Pedestrian Trail from said mid-block crossing to West Plaza Dr. UCF to develop an on-campus bicycle pathway linking existing trail systems of Orange Co. and Seminole Co.
<b>10-YEAR PROJECTED PROJECTS</b>									
<b>MAIN CAMPUS</b>		9	Research II	Main 0001	105	New Bldg.	2021 EPS CPC 2024	~105,000	Research Labs and Cleanrooms with supporting Office space (PECO \$114.64M, 2025-26 CIP)
<b>ACADEMIC &amp; STUDENT SUPPORT FACILITIES</b>		10	Advanced Workforce Entrepreneurship Cntr (aka Learning Laboratory, Discovery & Innovation Hub)	Main 0001	155	New Bldg.	2021 EPS CPC 2024	~100,000	Multidisciplinary classroom and teaching lab facility for several colleges (PECO \$76.0M, 2025-26 CIP)
		11	Performance, Immersive Experience & Entertainment Laboratory - PIXEL (aka Performing Arts Complex Phase II)	Main 0001	0119 P	Addition to 0119	2021 EPS CPC 2024	~100,000	Flexible performance space w/ multiple venues, assembly and production support spaces (PECO \$77.6M, 2023-24 CIP)
		12	Arboretum & Sustainability Center	Main 0001	TBD	New Bldg.	2020-30 SCP	~15,000	New Center replaces aging Arboretum modular
		13	Space Exploration Building	Main 0001	TBD	New Bldg.	CPC 2024	~100,000	
		14	i-Design Engineering Center	Main 0001	TBD	New Bldg.	CPC 2024	~22,000	
		15	Secure Research Facility	Main 0001	TBD	New Bldg.	CPC 2024	~10,000	UCF/Military Collaboration & SCIF
		16	Student Success Center	Main 0001	TBD	TBD	CPC 2024	TBD	Collocate student services, resources, and academic assistance
		17	Research III	Main 0001	TBD	New Bldg.	2020-30 SCP	TBD	Future Research Facility
		18	Howard Phillips Hall	Main 0001	0014	Renov/Remod	2021 EPS	10%	64,619 Total Renovation (PECO \$34M, 2025-26 CIP)
		19	CREOL	Main 0001	0053	Renov/Remod		22%	111,891 Ph 1 and Ph 2, the older sections. Build-out of white box space

# Capital Improvements Map



## ATHLETICS

- 1 – Intercept Garage
- 2 - Football Tower
- 3 - Football Campus
- 4 – Multipurpose
- 5 - Soccer Stadium
- 6 - Track
- 7 – Practice Field
- 8 – Tennis

## RESEARCH (all subject to new names)

- 9 – Research II
- 10 – Space Exploration Bldg
- 11 – Research III
- 12 – Advanced Workforce  
Entrepreneurship Center



# Capital Improvements Map

## HOUSING

- 1, 2, 3 – Housing I, II, III
- 4 – Housing Garage

## OTHER

- 5 – Millican Parking/Landscape
- 6 – Main Entry Improvements
- 7 – Creative School
- 8 – Performance, Immersive Experience & Entertainment Laboratory (PIXEL)
- 9 – Academic Building

ARA DRIVE (not shown)  
Water Treatment Plant  
Storage Building



# Transportation

- Includes GOPs related to and for the provision of transit, auto circulation, parking, pedestrian and non-motorized vehicle facilities, sustainable transportation
- Evaluates modes of travel (bicycle, micromobility, pedestrian, transit, and motor vehicle) both on-campus and off-campus
- New Data and Analysis:
  - Documented the quantity and severity of vehicle and non-motorized crashes
  - Incorporated UCF's comprehensive lighting assessment
  - Created walking proximity map for campus and adjacent non-university land

# Housing

- Provide more beds to house a majority of FTIC and retained 2nd year undergraduate students in support of retention and graduation efforts
- Potential locations for future housing:
  - West of the Recreation and Wellness Center on former Wayne Densch location.
  - West of Housing Administrative Building (existing surface parking lot)
  - Existing Creative School location
- Timing or phasing for renovation and remodeling of existing university-controlled housing facilities will be determined by Facility Conditions Assessments conducted during the element period





# General Infrastructure

- Added Water policies regarding pending EPA regulations, monitoring raw water well quality, and prioritizing use of reclaimed water
- Addresses rising energy costs and initiatives to improve energy efficiency
- Addresses concurrency per state statute - the provision of adequate capacity for stormwater management, potable water, sanitary sewer and treatment, and solid waste facilities required to meet the future needs of the university
- Addresses concurrency per UCF guidelines – for chilled water, electrical power, natural gas, and telecommunications

# Conservation

- No major changes to Introduction or Conservation of Natural Ecosystems and Resources
- Sustainability items highlighted in green throughout the document
- Added data about the use of the natural lands related to academic purposes





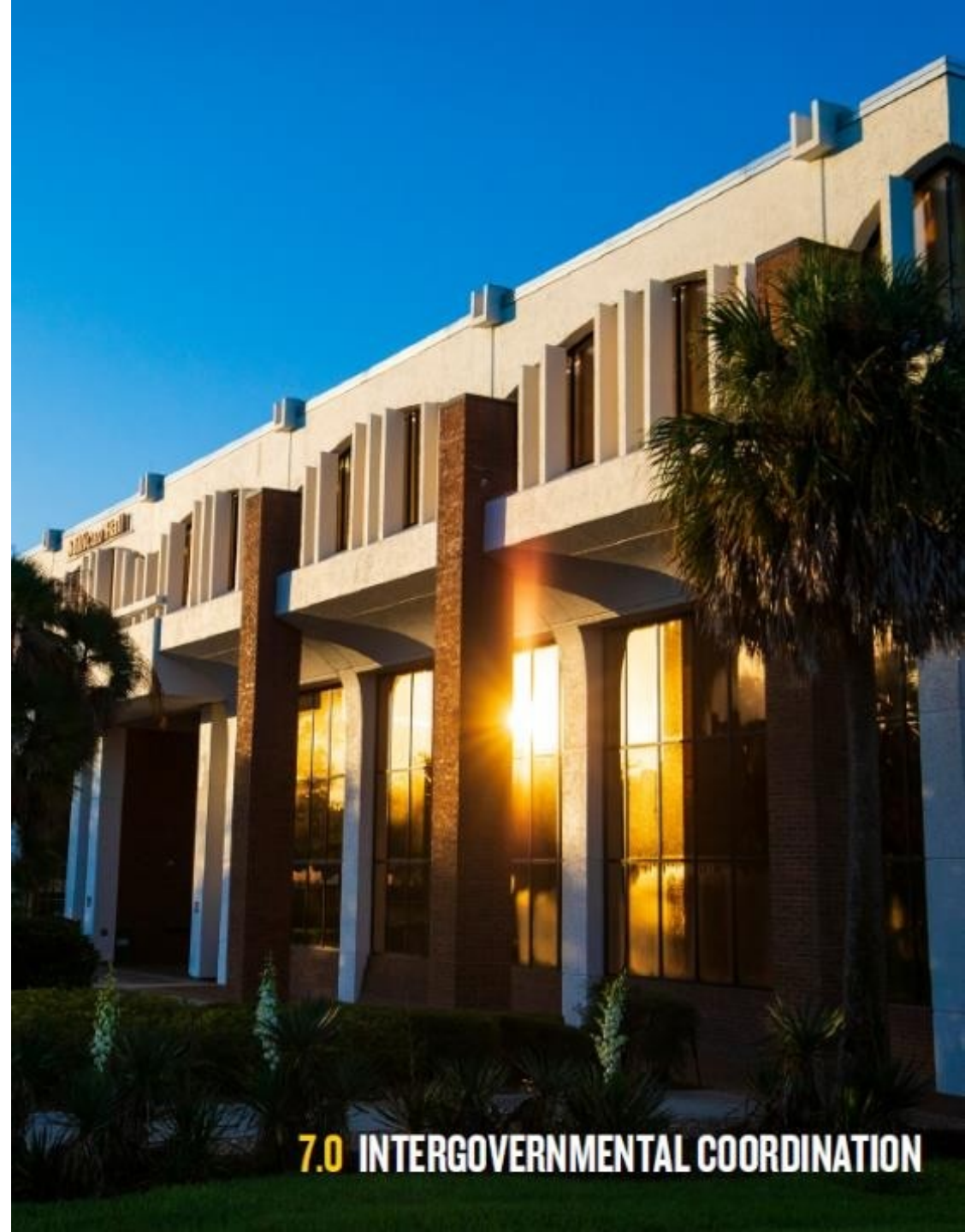
# Recreation & Open Space

- Revised comparisons to peer institutions demonstrating need for additional recreation space, particularly with recent space reductions
- Describe priorities for future planning to expand RWC Park and Lake Claire. Noted upcoming CITF funding for capital improvements to RWC HVAC system and Lake Claire boat house
- UCF Athletics is committed to making the Kenneth G. Dixon Athletics Village the best of its kind in collegiate athletics, to include significant expansion during this planning period as funding becomes available



# Intergovernmental Coordination

- No content changes, minor language refinements.
- Promotes land use compatibility between UCF and our host local government, Orange County.
- Identifies and resolves goals, objectives, policies and development proposed in campus master plans that may need coordination with adjacent local governments, and regional and state agency plans.



# Review Agencies

- **Orange County (Host Local Government)**
- Seminole County
- City of Orlando
- City of Oviedo
- St. Johns River Water Management District (SJRWMD)
- East Central Florida Regional Planning Council (ECFRCP)
- Florida Department of Environmental Protection (FDEP)
- Florida Department of Transportation (FDOT)
- Florida Department of State (FDOS)
- Florida Department of Commerce (FloridaCommerce)
- Florida Fish and Wildlife Conservation Commission (FWC)

# Schedule

## COMPLETED

- ELEMENT TEAMS INCLUDED STUDENT GOVERNMENT REPRESENTATIVES
- ELEMENT DRAFTS - COMPLETED MAY 1
- OPEN HOUSE – MAY 29
- PDC INTERNAL REVIEW - COMPLETED JULY 1
- FIRST PUBLIC HEARING – JULY 23

## NEXT STEPS

- **MANDATORY 90 DAY REVIEW – AUGUST 1 TO OCTOBER 30**
- **REFINE DOCUMENT, INCLUDE IN BOT MATERIALS – 1<sup>ST</sup> WEEK OF NOVEMBER**
- **SECOND PUBLIC HEARING, BOT APPROVAL – DECEMBER 5**

# 2025-35 UCF CAMPUS MASTER PLAN UPDATE

## Public Comment

- **By mail:**

Campus Master Plan

Facilities Planning & Construction

3528 North Perseus Loop

PO Box 163020

Orlando, FL 32816-3020

- **By email:**

[CampusMasterPlan@ucf.edu](mailto:CampusMasterPlan@ucf.edu)

- **Website:**

[www.fp.ucf.edu](http://www.fp.ucf.edu)